

Systematic review and meta-analysis of low-dose CT-driven biopsy for pulmonary nodules

Ying Zhao¹, Kun Xiong², Ya-Nan Lv²

¹School Hospital, Xuzhou College of Industrial Technology, Xuzhou, China

²Xuzhou Universal Medical Imaging Diagnostic Center, Xuzhou, China

Videosurgery Miniinv 2023; 18 (4): 603–611

DOI: <https://doi.org/10.5114/wiitm.2023.131563>

Abstract

Introduction: The diagnosis of pulmonary nodules (PNs) has traditionally relied on computed tomography (CT)-guided biopsy. To reduce radiation exposure, low-dose CT-guided PN biopsy has been employed.

Aim: This meta-analysis aimed at evaluating the efficacy and safety of low-dose CT-guided biopsy in the diagnosis of PNs.

Material and methods: PubMed, Web of Science, and Wanfang were searched for relevant articles until June 2023. Comparing low-dose CT to normal-dose CT, we considered factors such as diagnostic yield, diagnostic accuracy, biopsy process time, dose-length product (DLP) value, the frequency of pneumothorax and pulmonary bleeding, and the frequency with which complications necessitated the placement of a chest tube.

Results: This meta-analysis included data from a total of 6 investigations. There was a total of 459 patients who had a CT-guided PN biopsy performed at a low dosage, and 384 patients who had a normal-dose CT-guided PN biopsy. There were no statistically significant differences between the low-dose CT and normal-dose CT groups in terms of diagnostic accuracy ($p = 0.08$), diagnostic yield ($p = 0.55$), biopsy procedure duration ($p = 0.30$), pneumothorax ($p = 0.61$), pulmonary hemorrhage ($p = 0.29$), or complications requiring a chest tube ($p = 0.48$). Low-dose CT patients obtained a DLP that was 91% lower than those in the standard-dose CT group ($p = 0.01$). According to Egger's test, there is a significant possibility of publication bias in DLP ($p = 0.034$).

Conclusions: The diagnostic and safety results of low-dose CT-driven PN biopsy are equivalent to those of the standard one, although patients are much less exposed to radiation.

Key words: computed tomography, biopsy, pulmonary nodule, low-dose.

Introduction

Non-transparent lesions measuring ≤ 3 cm in diameter on imaging that are completely encased by lung parenchyma are considered pulmonary nodules (PNs) [1–3]. Malignant neoplasms and benign PNs have been previously described [1–3]. When the diameter of the PNs is between 6 and 8 mm, frequent computed tomography (CT) follow-up is required, as recommended by the Fleischner Society

recommendations [4]. A repeat CT scan in 3 months, positron emission tomography (PET)/CT, or a tissue biopsy should be considered for PNs with a diameter more than 8 mm [4]. Currently, CT-guided biopsy is most often utilized for PN diagnosis [5–7]. However, CT-guided biopsy, in contrast to CT screening, needed recurrent scanning throughout the biopsy operation, and hence may be linked with much greater radiation doses compared to routine diagnostic CT imaging approaches [8–10].

Address for correspondence

Dr Ya-Nan Lv, Xuzhou Universal Medical Imaging Diagnostic Center, Xuzhou, China, e-mail: xzlyn7127@163.com

Many studies have employed low-dose CT for biopsy guidance in order to reduce radiation exposure to PNs [11–16]. Compared to the normal-dose CT guidance, the radiation dose can be reduced by 81–92% by using low-dose CT, without reducing the overall diagnostic accuracy [11–16]. Although major dose reduction can exacerbate noise and decreased image quality, use of iterative reconstruction technique can significantly reduce the image noise and provide better overall image quality [15]. However, owing to variations in research design, CT equipment, scanning settings, biopsy needle types, or operator expertise, outcomes may vary widely from study to study. A convincing conclusion about low-dose CT-driven biopsy for PNs requires a meta-analysis.

Aim

The purpose of this meta-analysis is to evaluate the efficacy and safety of low-dose CT-guided biopsy in diagnosing PNs.

Material and methods

This study has been registered at INPLASY.COM (No. INPLASY202370073) and the Preferred Reporting Items for Systematic Reviews and Meta-Analyses (PRISMA) guidelines were followed when this meta-analysis was conducted.

Study selection

Up to June 2023, we used the following formula to search PubMed, Web of Science, and Wanfang for relevant studies: (((((computed tomography) OR (CT)) AND ((lung) OR (pulmonary))) AND (nodule)) AND (biopsy)) AND (low-dose). Studies needed to satisfy the following requirements to be included: (a) studies using comparisons, (b) patients with PNs, (c) therapies involving low- vs normal-dose CT-guided biopsy, and (d) languages not otherwise specified. Studies were not included if they met any of the following criteria: (a) they were not comparative, (b) their titles and/or abstracts were not written in English, and (c) they were case reports, letters, or reviews.

Data extraction

Two writers independently retrieved relevant data from eligible papers, and disagreements were settled by discussion with a third writer. The number of patients, their ages and gender ratios, the di-

ameter of their PNs, and the distance between their PNs and the pleura were all extracted as well as the study's first author, publication year, nation, study design, and methodology. The rates of pneumothorax and pulmonary bleeding, as well as the frequency with which these complications necessitated insertion of a chest tube, were among the extracted outcome data.

Quality assessment

Randomized controlled trials (RCTs) were evaluated for quality using the Cochrane risk-of-bias methodology. RCTs were classified as high, low, or uncertain quality based on their detection, performance, selection, attrition, reporting, and other types of bias.

The quality of studies that were not RCTs was evaluated using the Newcastle-Ottawa scale (NOS), which ranks studies based on their comparability (2 points), selection (4 points), and outcomes (3 points). Research quality was judged to be excellent if the NOS score was ≥ 7 .

Endpoints

The dose-length product (DLP) value is the major outcome measure in this meta-analysis, with secondary outcomes including diagnostic yield, diagnostic accuracy, biopsy process length, pneumothorax rate, pulmonary bleeding rate, and the rate at which complications necessitated chest tube insertion. No specific radiation dose has yet been set for low-dose CT, but some researchers have suggested that the effective dose of low-dose CT is < 2.5 mSv [17]. The yield of a diagnosis was defined as the ratio of cases with biopsy-based benignity plus malignancy to the total number of included patients. True plus false positives divided by the number of patients who were given a definitive diagnosis was utilized for estimating the diagnostic accuracy [15]. The dose-length product was used to calculate the exposure level.

Statistical analysis

Stata v12.0 and RevMan v5.3 were utilized for the combined analysis. Mean difference (MD) values with 95% confidence intervals (CIs) were used for comparisons of continuous variables while 95% CIs and pooled odds ratios (ORs) were computed for dichotomous variables. Heterogeneity was evaluated

Table I. Baseline data of the included studies

No.	First author	Year	Country	Design	NOS
1	Ding [11]	2022	China	Randomized controlled trial	–
2	Fu [12]	2020	China	Randomized controlled trial	–
3	Huang [13]	2021	China	Retrospective	8
4	Li [14]	2019	China	Randomized controlled trial	–
5	Li [15]	2023	China	Randomized controlled trial	–
6	Zhang [16]	2021	China	Retrospective	8

NOS – Newcastle-Ottawa Scale.

using the I^2 statistic and Q test, with a value of $I^2 > 50\%$ indicating substantial heterogeneity. When the degree of heterogeneity was high, random-effects models were employed, while fixed-effect models were applied otherwise. In an attempt to identify the origins of the observed variation, sensitivity analyses were performed using a “leave one out” strategy. Historically, funnel plots were used to examine potential publication bias. Publication bias would be minimal if all research fell within the narrow part of the funnel plots. Otherwise, the article was evaluated using Egger’s test with a significance level of $p < 0.05$.

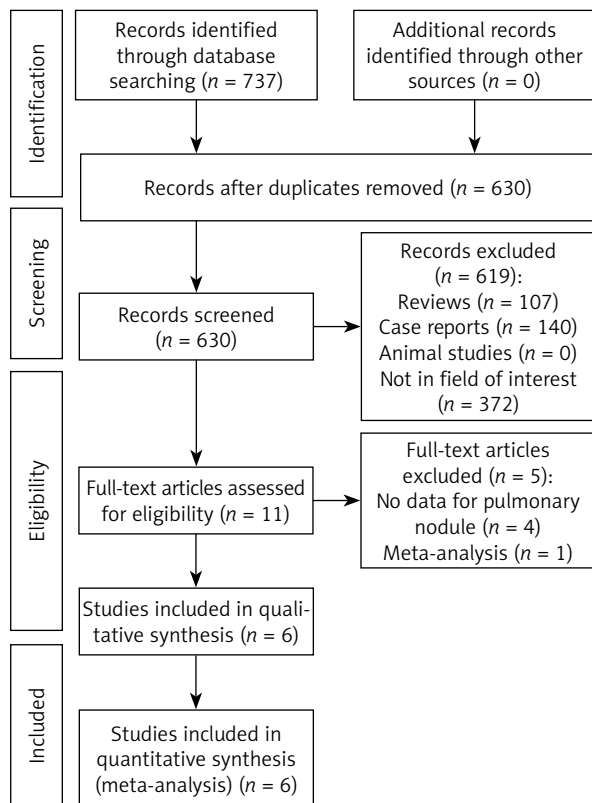


Figure 1. Meta-analysis flow chart

Results

Included studies

A total of 737 studies were found that fit the criteria of the study plan. After careful screening, we included 6 studies in our meta-analysis (Table I). Figure 1 depicts the methodology used to identify studies. There were four randomized controlled trials and two retrospective investigations. The included investigations were only from China. Two out of the four RCTs have an ambiguous risk of bias in selection, performance, detection, and others (Figure 2), while the other two have an ambiguous risk of bias in detection and others. The NOS of 8 is shown in both of the retrospective investigations.

Low-dose CT-guided PN biopsies were performed on 459 patients while normal-dose CT-guided PN bi-

	Random sequence generation (selection bias)	Allocation concealment (selection bias)	Blinding of participants and personnel (performance bias)	Blinding of outcome assessment (detection bias)	Selective outcome data (attrition bias)	Selective reporting (reporting bias)	Other bias
Ding 2022	?	?	?	?	+	+	?
Fu 2020	+	+	+	?	+	+	?
Li 2019	?	?	?	?	+	+	?
Li 2023	+	+	+	?	+	+	?

Figure 2. Quality assessment for the included RCTs

opsies were performed on 384 patients throughout the 6 investigations (Table II). Table III displays the specifics of the CT apparatus, parameters, and biopsy needle parameters.

Diagnostic yield

Diagnostic yield rates were reported in four trials [12, 13, 15, 16], with a total of 291 patients undergoing low-dose CT-guided biopsy and 285 undergoing standard-dose CT-guided biopsy. Low-dose and

normal-dose groups show no remarkable heterogeneity ($I^2 = 0\%$, Figure 3 A) in their pooled diagnostic yield rates, which are similar at 48.8% and 51.2%, respectively ($p = 0.55$).

Diagnostic accuracy

The diagnostic accuracy rates were given in all investigations, and the pooled rates show no significant heterogeneity ($I^2 = 0\%$) between the low- and normal-dose groups (96.4 vs. 93.6, $p = 0.08$, Figure 3 B).

Table II. Characteristics of the patients in the included studies

Studies	Groups	Patients (n)	Age [years]	Gender (M/F)	BMI [kg/m ²]	Nodule diameter [mm]	Lesion-pleura distant [mm]
Ding [11]	Low-dose	30	37–68 for all	29/31 for all	Not given	Not given	Not given
	Normal-dose	30			Not given	Not given	Not given
Fu [12]	Low-dose	52	Not given	Not given	Not given	22.2	Not given
	Normal-dose	50	Not given	Not given	Not given	20.8	Not given
Huang [13]	Low-dose	70	63.5	45/25	23.1	24.7	17
	Normal-dose	65	59.9	39/26	22.9	23.6	20
Li [14]	Low-dose	140	61	97/43	27.1	Not given	23
	Normal-dose	70	66	44/26	26.4	Not given	22
Li [15]	Low-dose	100	63.7	68/32	23.1	24.8	Not given
	Normal-dose	100	61.1	62/38	22.8	23.5	Not given
Zhang [16]	Low-dose	67	63.4	44/23	23.2	24.6	16.4
	Normal-dose	69	60.2	41/28	23.0	23.6	20.3

M – male, F – female, BMI – body mass index.

Table III. Characteristics of the CT and biopsy needles in the included studies

Studies	CT types	CT manufacturers	Scanning parameters						Needle types	Needle size
			Low-dose group			Normal-dose group				
			Tube voltage [kV]	Tube current	Thickness [mm]	Tube voltage [kV]	Tube current	Thickness [mm]		
Ding [11]	64 row	Siemens	120	40 mA	1	120	120 mA	1	Core needle	18G
Fu [12]	16 row	Philips	120	15 mAs	2	120	150 mAs	2	Core needle	18G
Huang [13]	16 row	Philips	120	15 mAs	2	120	150 mAs	2	Core needle	18G
Li [14]	DSCT	Siemens	100 Sn	70 mAs	4	110	50 mAs	4	Core needle	18G
Li [15]	16 row	Philips	120	15 mA	2	120	150 mA	2	Core needle	18G
Zhang [16]	16 row	Philips	120	15 mAs	2	120	150 mAs	2	Core needle	18G

CT – computed tomography, DSCT – dual-source CT.

Biopsy procedure duration

There were 3 studies that looked at how long the biopsy process took, reporting on 221 patients who had a low-dose CT-guided biopsy and 220 patients who had a normal-dose CT-guided biopsy [12, 15, 16]. Neither the low- nor the normal-dose groups showed any significant heterogeneity ($I^2 = 0\%$) in the pooled biopsy procedure time (MD = -0.50, $p = 0.30$, Figure 3 C).

DLP

The pooled DLP shows a remarkable difference between the low- and normal-dose groups (MD = -359.28, $p = 0.01$, Figure 3 D). All studies reported the DLP value. Nonetheless, the heterogeneity is

noteworthy ($I^2 = 100\%$). The origin of the variation was not determined by the sensitivity analysis.

Pneumothorax

The rates of pneumothorax were reported in five studies [12–16], with a total of 431 patients undergoing low-dose CT-guided biopsy and 355 undergoing standard-dose CT-guided biopsy. There is no significant heterogeneity ($I^2 = 0\%$) between the low- and normal-dose groups in the pooled pneumothorax rates (16.5% vs. 17.2%, $p = 0.61$, Figure 3 E).

Pulmonary hemorrhage

Pulmonary hemorrhage rates have been reported in five investigations, including 431 and 335 patients

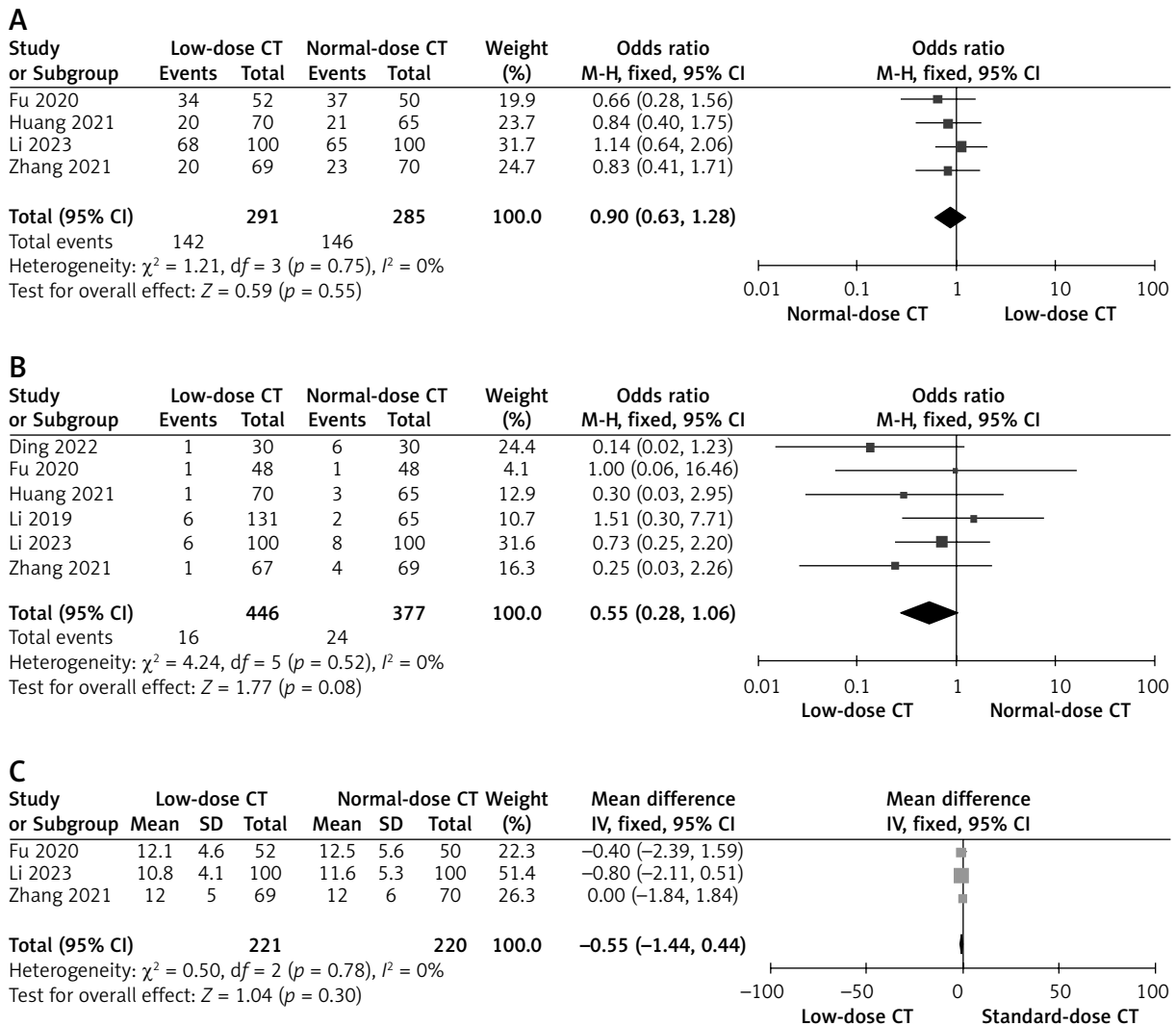
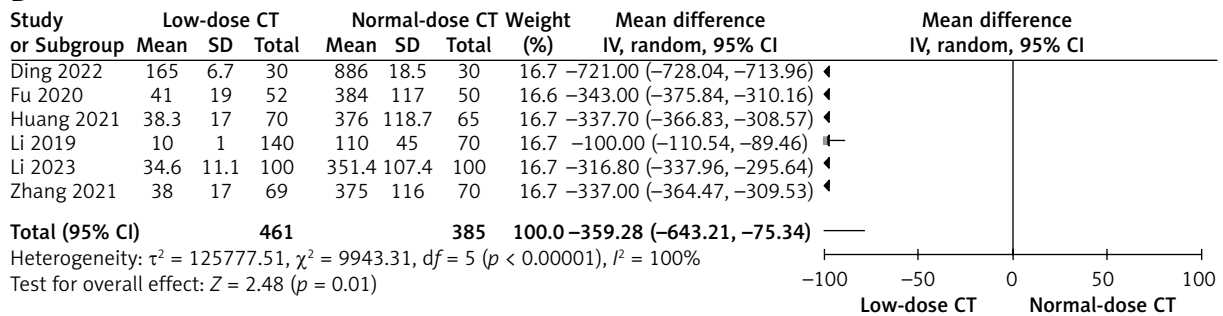
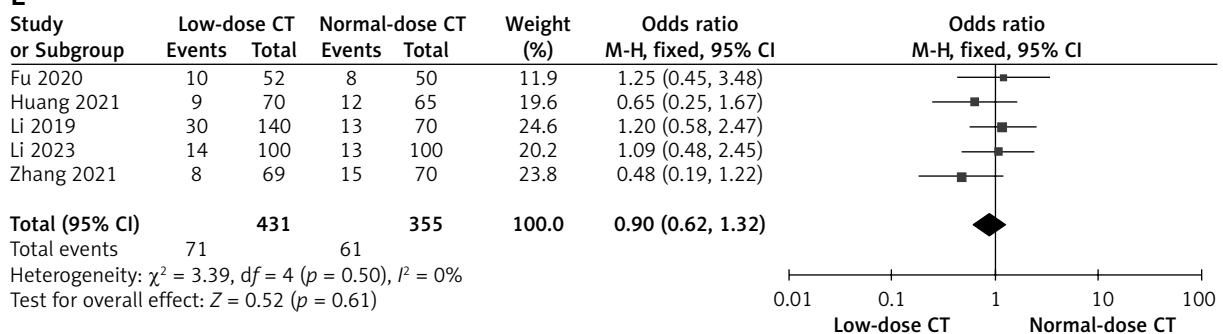


Figure 3. Pooled results for (A) diagnostic yield, (B) diagnostic accuracy, (C) biopsy procedure duration

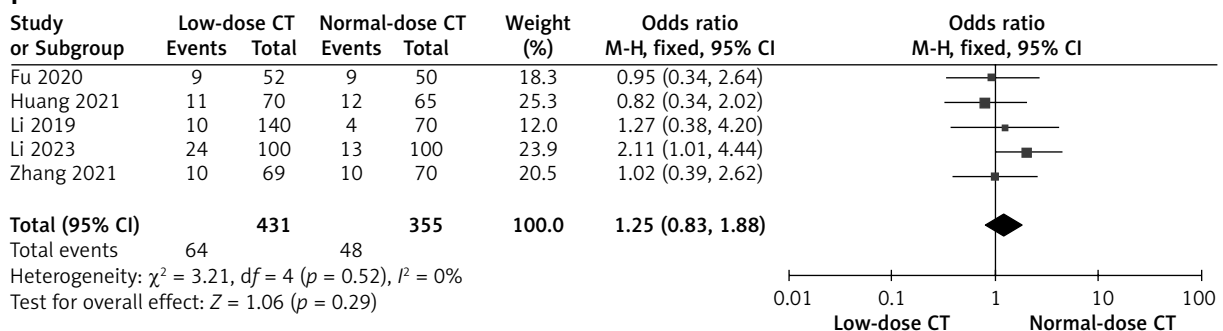
D



E



F



G

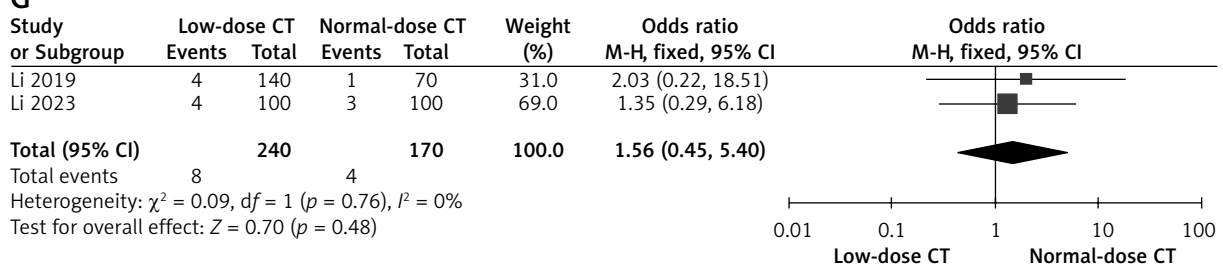


Figure 3. Cont. (D) DLP, (E) pneumothorax, (F) pulmonary hemorrhage, and (G) complication requiring chest tube insertion between low-dose and normal-dose groups

who had low- and standard-dose CT-guided biopsy, respectively [12–16]. Comparison of the pooled rates of pulmonary bleeding between the low-dose and normal-dose groups reveals no remarkable heterogeneity ($I^2 = 0\%$; 14.8% vs. 13.5%, $p = 0.29$, Figure 3 F).

Complications requiring chest tube insertion

Low-dose CT-guided biopsy was studied in two investigations [14, 15], with 240 patients and normal-dose CT-guided biopsy in one study each, reporting on the frequencies of complications requiring chest tube insertion. Without any remarkable heterogeneity ($I^2 = 0\%$), the pooled rates of complications requiring chest tube insertion are similar across the low-dose and normal-dose groups (3.3% vs. 2.4%, $p = 0.48$, Figure 3 G).

Publication bias

The funnel plots showed that there is no significant risk of publication bias in the diagnostic yield,

diagnostic accuracy, pneumothorax rate, pulmonary hemorrhage rate, and the rate of complication required chest tube insertion (Figures 4 A–G). Egger’s test showed that the risk of publication bias of biopsy procedure duration was low ($p = 0.999$), while the risk of publication bias of DLP was high ($p = 0.034$).

Discussion

This meta-analysis compared low- to standard CT-driven PN biopsy to evaluate its diagnostic efficacy and safety. No remarkable discrepancy in the diagnostic yield or accuracy rates between the low- and normal-dose groups was found, suggesting that the former procedure does not compromise the accuracy with which CT-driven PN biopsy could diagnose patients. CT-guided PN biopsy often does not need fine lesion details, but suitably viewable positions of the needle lesion and tip are required [18]. Despite the inferior imaging quality of low- compared to normal-dose CT, this technique is nonetheless widely utilized.

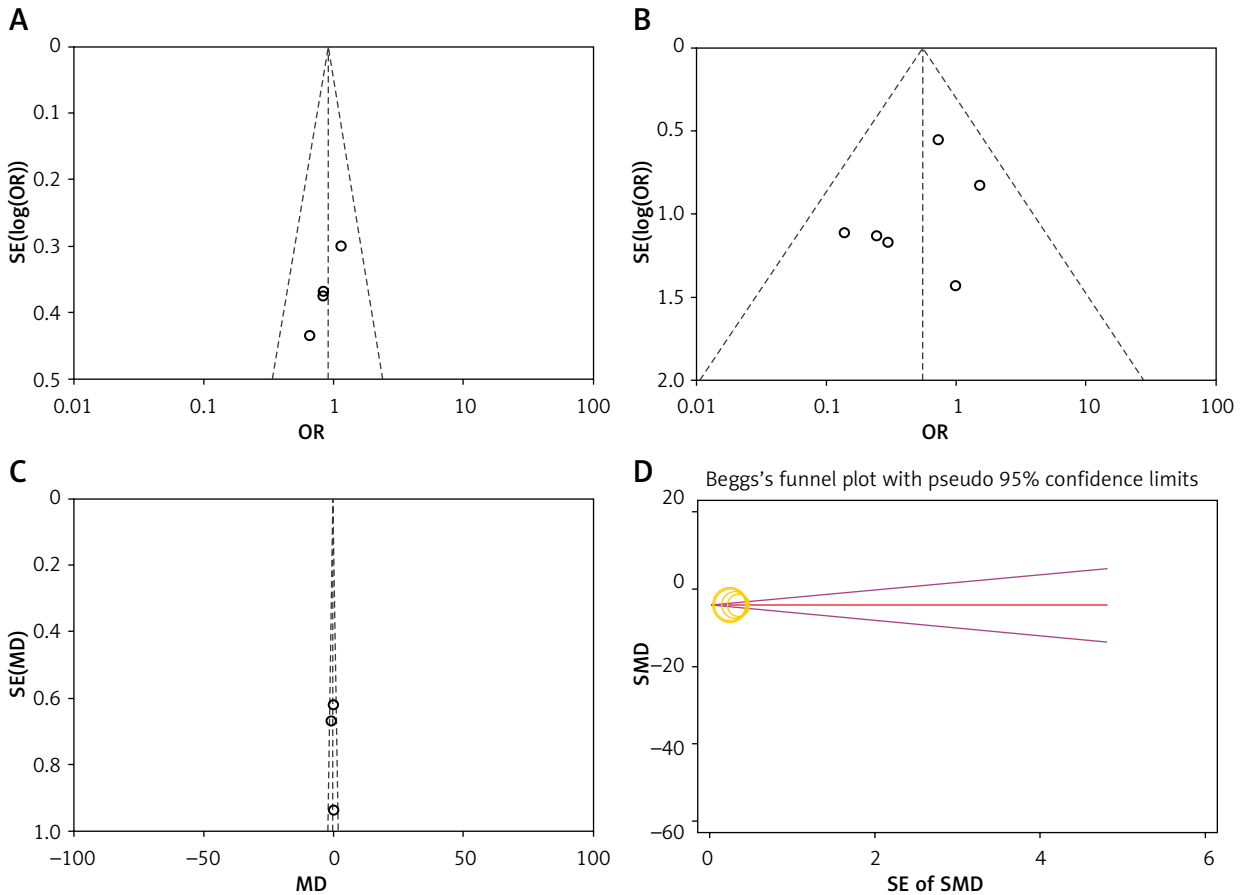


Figure 4. Funnel plots of (A) diagnostic yield, (B) diagnostic accuracy, (C) biopsy procedure duration, (D) DLP

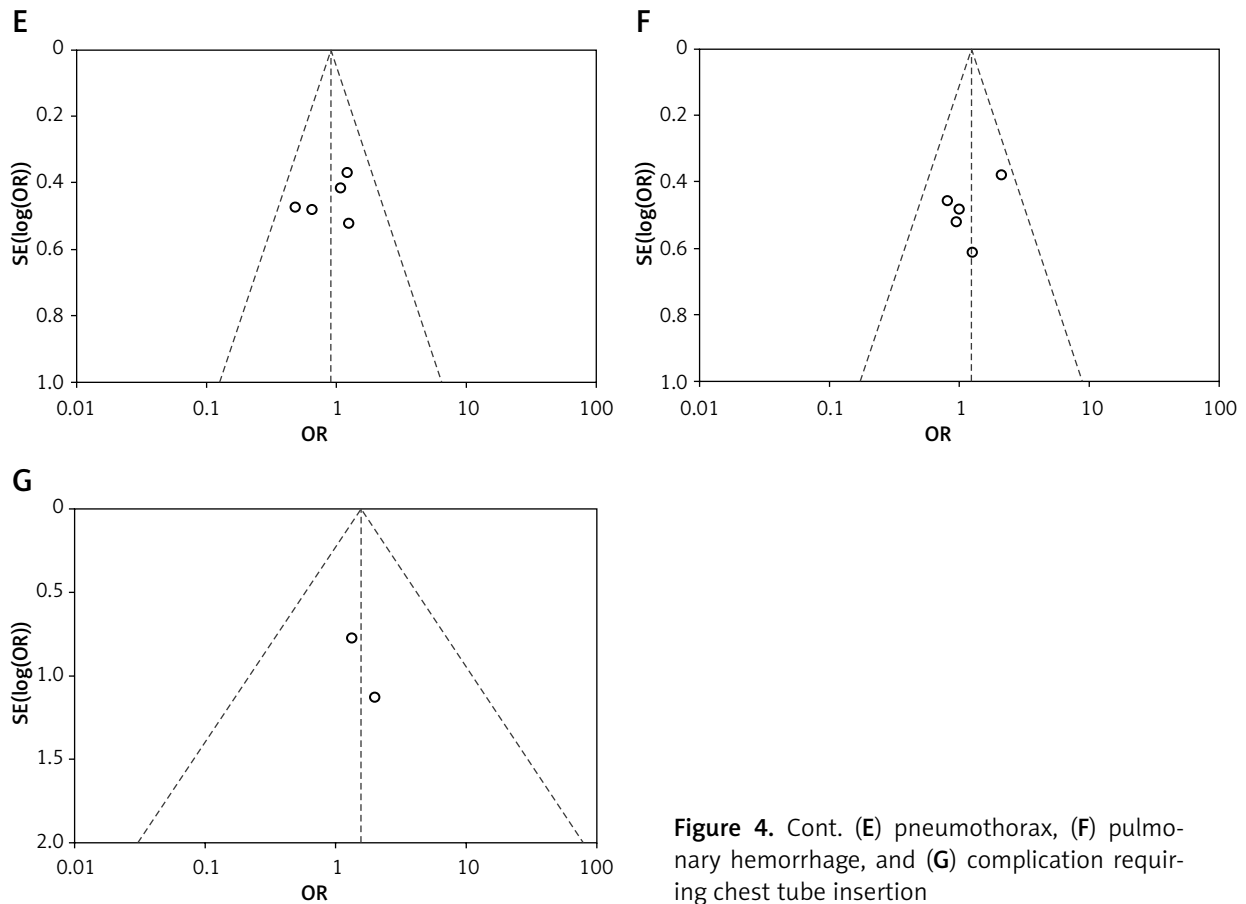


Figure 4. Cont. (E) pneumothorax, (F) pulmonary hemorrhage, and (G) complication requiring chest tube insertion

Overall diagnostic accuracy is 95%, with a pooled accuracy of 96.4% from the low-dose group and 93.6% from the normal-dose one. This finding is consistent with previous research on CT-guided pulmonary biopsies [18, 19]. The diagnostic accuracy of CT-guided percutaneous coaxial core needle biopsy of lung lesions is affected by benign pulmonary lesions, pulmonary lesions smaller than 1.5 cm (which provide technical difficulties), and pulmonary lesions bigger than 5 cm (which are associated with a greater necrosis rate) [18]. To improve diagnostic accuracy during CT-guided PN biopsy operations, current practices favor the use of multi-planar reconstruction and co-axial approaches [18, 20]. Using a co-axial approach and multi-planar reconstruction, researchers can more accurately track the needle's apex.

Moreover, DLP is shown to be considerably lower in the low- than the normal-dose group. The random-effects model nevertheless showed a significant difference between the two groups, despite the high heterogeneity that was also found. As a result,

we think that low-dose CT is an excellent way to protect patients from unnecessary radiation. The wide discrepancy might be due to the fact that each study used a different CT setup and related proceedings.

In this systematic review, we found no evidence that using low-dose CT compromises the safety of CT-guided PN biopsy. Chest tube insertion due to complications was also uncommon, with a pooled incidence of less than 5% across both groups in our meta-analysis. Longer needle paths and greater distances between the lesion and the pleura are also associated with an increased risk of pneumothorax and pulmonary bleeding during CT-guided biopsy [21, 22]. Careful evaluation of preoperative CT imaging is necessary for selecting an optimum approach for puncturing the deeper PNs.

There are limitations in this meta-analysis. First, all investigations were conducted in China. Therefore, the global representativeness of this meta-analysis is low. More research from all across the globe is required. Second, the CT parameters used in this investigation were not uniform, which might have

led to a high risk of bias. Thirdly, although CT-driven biopsy for PNs is the primary focus of our meta-analysis, not all studies reported the average width of PNs or the average distance from the lesion to the pleura. Therefore, there is a significant possibility of bias in this meta-analysis due to these results.

Conclusions

Low-dose CT-guided PN biopsy may achieve equivalent diagnostic and safety results to those of standard-dose CT-guided PN biopsy while significantly reducing patients' radiation exposure.

Conflict of interest

The authors declare no conflict of interest.

References

- Chen K, Nie Y, Park S, et al. Development and validation of machine learning-based model for the prediction of malignancy in multiple pulmonary nodules: analysis from multicentric cohorts. *Clin Cancer Res* 2021; 27: 2255-65.
- Li Y, Chen KZ, Wang J. Development and validation of a clinical prediction model to estimate the probability of malignancy in solitary pulmonary nodules in Chinese people. *Clin Lung Cancer* 2011; 12: 313-9.
- Du J, Fu YF, Lv YN. Preoperative localization for lung nodules: a meta-analysis of bronchoscopic versus computed tomography guidance. *Videosurgery Miniinv* 2022; 17: 601-10.
- MacMahon H, Naidich DP, Goo JM, et al. Guidelines for management of incidental pulmonary nodules detected on CT images: from the Fleischner Society 2017. *Radiology* 2017; 284: 228-43.
- Huang MD, Weng HH, Hsu SL, et al. Accuracy and complications of CT-guided pulmonary core biopsy in small nodules: a single-center experience. *Cancer Imaging* 2019; 19: 51.
- Takeshita J, Masago K, Kato R, et al. CT-guided fine-needle aspiration and core needle biopsies of pulmonary lesions: a single-center experience with 750 biopsies in Japan. *AJR Am J Roentgenol* 2015; 204: 29-34.
- Uzun Ç, Akkaya Z, Düşünceli Atman E, et al. Diagnostic accuracy and safety of CT-guided fine needle aspiration biopsy of pulmonary lesions with non-coaxial technique: a single center experience with 442 biopsies. *Diagn Interv Radiol* 2017; 23: 137-43.
- Zhang P, Liu JM, Zhang YY, et al. Computed tomography-guided lung biopsy: a meta-analysis of low-dose and standard-dose protocols. *J Cancer Res Ther* 2021; 17: 695-701.
- Chang DH, Hiss S, Mueller D, et al. Radiation dose reduction in computed tomography-guided lung interventions using an iterative reconstruction technique. *Rofo* 2015; 187: 906-14.
- Zhang J, Liu M, Liu D, et al. Low-dose CT with tin filter combined with iterative metal artefact reduction for guiding lung biopsy. *Quant Imaging Med Surg* 2022; 12: 1359-71.
- Ding N, Zhang K, Wang F, et al. Application value of low dose CT digital navigation technology in lung nodule puncture biopsy. *J Med Imaging* 2022; 32: 232-5.
- Fu YF, Li GC, Xu QS, et al. Computed tomography-guided lung biopsy: a randomized controlled trial of low-dose versus standard-dose protocol. *Eur Radiol* 2020; 30: 1584-92.
- Huang YY, Cheng H, Li GC. Computed tomography-guided core needle biopsy for lung nodules: low-dose versus standard-dose protocols. *Videosurgery Miniinv* 2021; 16: 355-61.
- Li C, Liu B, Meng H, et al. Efficacy and radiation exposure of ultra-low-dose chest CT at 100 kVp with tin filtration in CT-guided percutaneous core needle biopsy for small pulmonary lesions using a third-generation dual-source CT scanner. *J Vasc Interv Radiol* 2019; 30: 95-102.
- Li EL, Ma AL, Wang T, et al. Low-dose versus standard-dose computed tomography-guided biopsy for pulmonary nodules: a randomized controlled trial. *J Cardiothorac Surg* 2023; 18: 86.
- Zhang HM, Huo XB, Wang HL, et al. Computed tomography-guided cutting needle biopsy for lung nodules: a comparative study between low-dose and standard dose protocols. *Medicine (Baltimore)* 2021; 100: e24001.
- Tækker M, Kristjánsdóttir B, Graumann O, et al. Diagnostic accuracy of low-dose and ultra-low-dose CT in detection of chest pathology: a systematic review. *Clin Imaging* 2021; 74: 139-48.
- Meng XX, Kuai XP, Dong WH, et al. Comparison of lung lesion biopsies between low-dose CT-guided and conventional CT-guided techniques. *Acta Radiol* 2013; 54: 909-15.
- Yeow KM, Tsay PK, Cheung YC, et al. Factors affecting diagnostic accuracy of CT-guided coaxial cutting needle lung biopsy: retrospective analysis of 631 procedures. *J Vasc Interv Radiol* 2003; 14: 581-8.
- Capasso R, Nizzoli R, Tiseo M, et al. Extra-pleuric coaxial system for CT-guided percutaneous fine-needle aspiration biopsy (FNAB) of small (≤ 20 mm) lung nodules: a novel technique using multiplanar reconstruction (MPR) images. *Med Oncol* 2017; 34: 17.
- Yang W, Sun W, Li Q, et al. Diagnostic accuracy of CT-guided transthoracic needle biopsy for solitary pulmonary nodules. *PLoS One* 2015; 10: e0131373.
- Xu C, Yuan Q, Chi C, et al. Computed tomography-guided percutaneous transthoracic needle biopsy for solitary pulmonary nodules in diameter less than 20 mm. *Medicine (Baltimore)* 2018; 97: e0154.

Received: 6.08.2023, **accepted:** 3.09.2023.